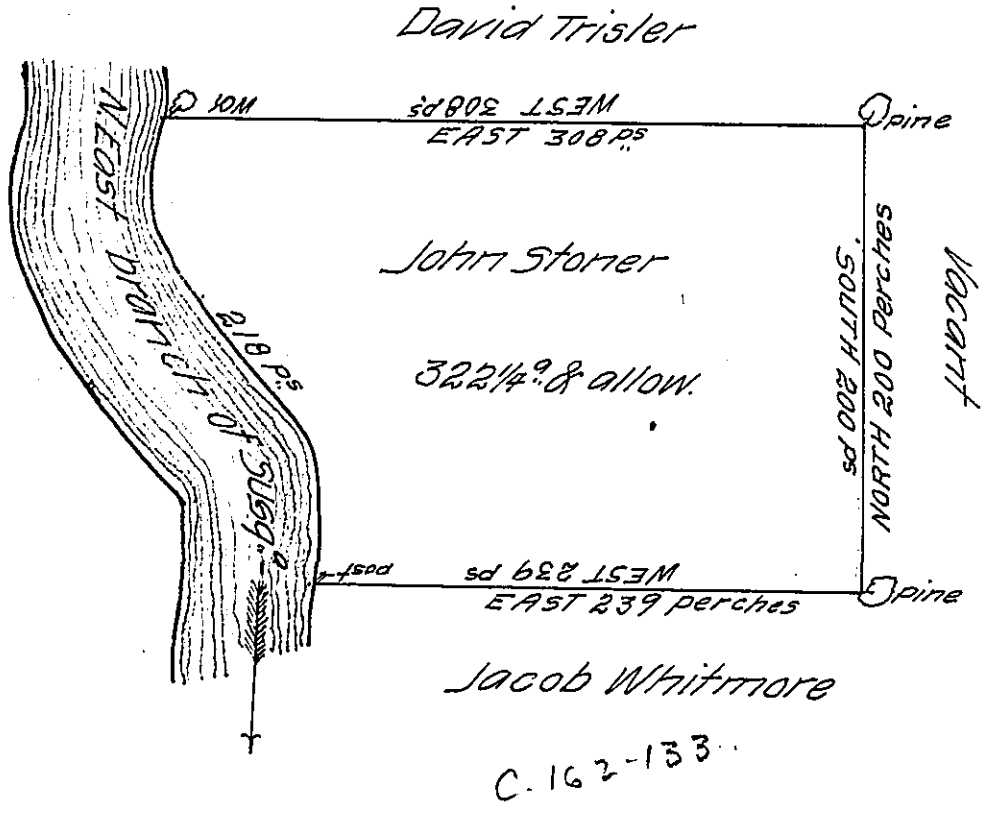


page 474



C. 162-133

A draught of a tract of land called - situate on the Easterly side of the North East branch of Susquehanna River about two miles & a half above the forks at Tihoga- adjoining and above land surveyed for Jacob Whitmore in the County of Northumberland containing three hundred & twenty two acres & a quarter besides the usual allowance of 6 P cent for roads &c^o surveyed the 23^d day of September 1773 for John Stoner in pursuance of an order dated the 3^d day of April 1769 Number 1790

To John Lukens Esq^r by Chas^s Stewart D^y Surv^r
 Survey^r Gen^l

IN TESTIMONY that the above is a copy of the original remaining on file in the Department of Internal Affairs of Pennsylvania, made conformably to an Act of Assembly approved the 16th day of February, 1833, I have hereunto set my Hand and caused the Seal of said Department to be affixed at Harrisburg, this nineteenth day of March 1907

Geo. D. Brown
 Secretary of Internal Affairs.